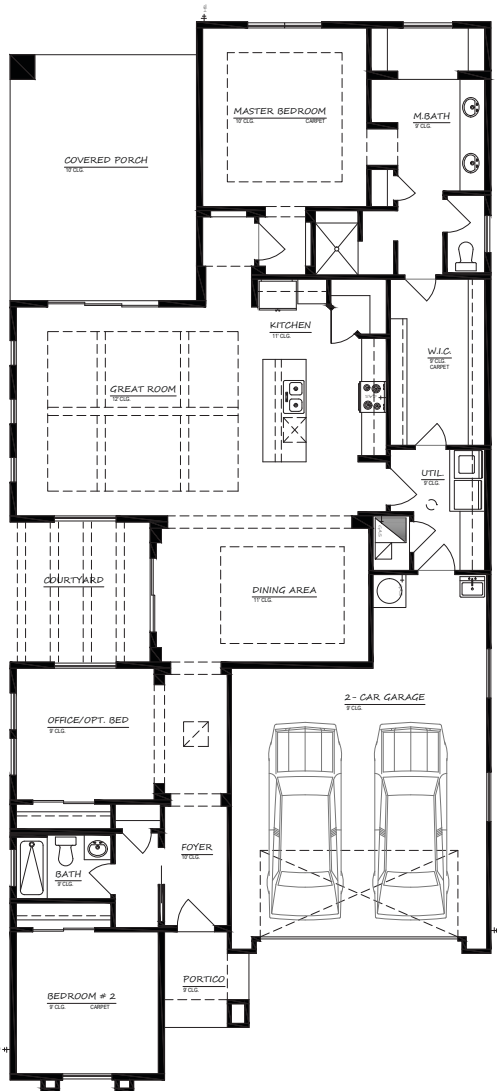


YOUR ULTIMATE DREAM HOME

The Durango



The Durango is the perfect blend of luxury and functionality. Ample living and storage space mean you can downsize without having to sacrifice. The Durango is dressed to impress with great scale and mass. Whether entertaining new neighbors or old friends, the open floor plan and great room makes it a treat to interact with guests, watch TV or enjoy views of the outdoors as you prepare dinner. The spacious master suite and spa-like bathroom provide a perfect retreat to escape from the day's activities. The central beamed courtyard and spacious rear patio extend your living space.

The Durango offers a formal dining room for that special set you can't part with or perhaps that game table you always wanted. The garage offers extended space for storage or hobbies and the master closet has a convenient option to open into the laundry room.

3 Bedroom / 2 Bath
2030 sq. ft. Living
128 sq. ft. Courtyard
300 sq. ft. Covered Patio



Raising the Bar

The Picacho Mountain team has traveled thousands of miles and completed countless hours of research to ensure we're providing you outstanding Courtyard home designs, concepts and practices. We have designed totally unique Courtyard homes that are functional yet classy and elegant.

Developer reserves the right to make changes in plans and elevations. Base pricing is subject to change. Lot premiums may apply.

