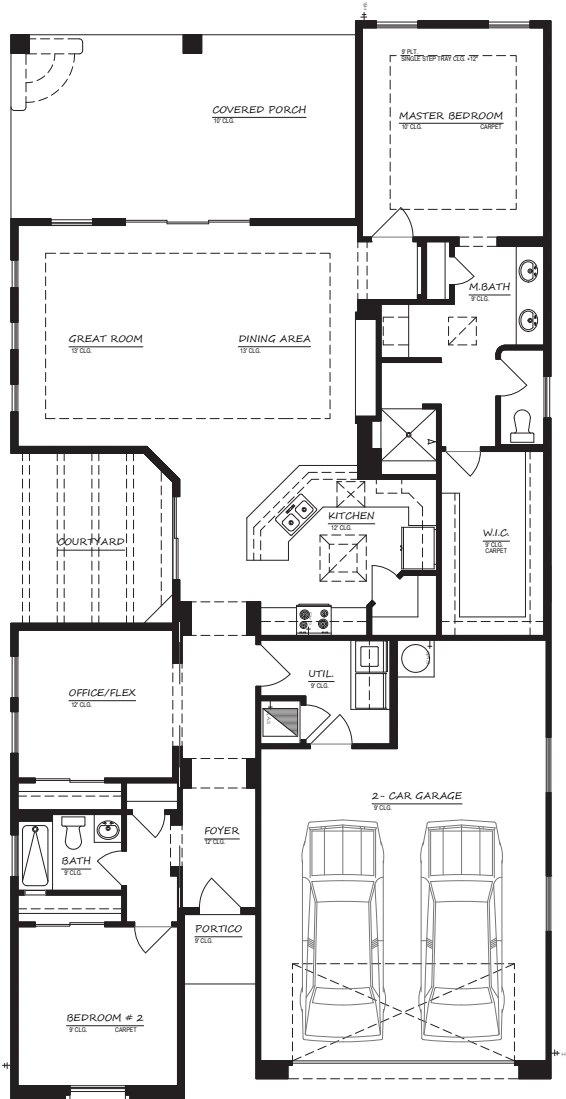


COMFORTABLE • EXCEPTIONAL • VERSATILE

The Butterfield



It's time for you to throw off those burdens of traditional homeownership with the Butterfield. This home will give you a renewed sense of freedom to pursue your dreams and a new season of life.

The Butterfield blends indoor and outdoor living, allowing for the enjoyment of the beautiful New Mexico climate. The spacious great room, dining room, kitchen and home office/guest room all open to an intimate beamed courtyard – perfect for entertaining or just sipping a cup of coffee in the morning. The back patio offers additional outdoor enjoyment and gives the Butterfield a seamless connection with the outdoors. Storage is a bonus with a large master closet and extra garage space for hobbies or a golf cart!

3 Bedroom / 2 Bath

1,832 sq. ft. Living

143 sq. ft. Courtyard

329 sq. ft. Covered Patio

It's Your Time!

The Willows Courtyard Homes are private enough to make you feel like your home is your own personal retreat yet offer the opportunity to enjoy a new community of friends. You've worked hard. Now it is time to enjoy the fruits of your labor with style and elegance. Our low-maintenance floor plans give you all the space you need without tying you down. Your time and energy are now free to try something new. Explore your passions. Pick up a new hobby... maybe even two.



Developer reserves the right to make changes in plans and elevations. Base pricing is subject to change. Lot premiums may apply.



PICACHOMOUNTAIN.COM • PHONE: (575) 523-2500